

# Tray Internals and Hardware

كواليتي واير برودكس  
QUALITY WIRE PRODUCTS

Single largest source in the middle east  
for all types of separation internals



# Welcome

## Quality Wire Products Company

Quality Wire Products is a single largest source in the middle east to manufacture and export various types of separation internals. QWP make Tray & hardware are used widely in refinery and petrochemical industries. Besides manufacturing and supplying tray replacements QWP offers repair and maintenance services for tray during shut down and turn around application.

You can either order Tray hardware from our catalog or you can send us the image of your broken hardware and we shall offer a replacement hardware. These tray hardware are available in SS409; SS410; SS304; SS316L; SS318L; Monel ; Inconel and other special metals.

Our catalog offers various types of trays with detail hardware informations which help the customer to identify and order the correct products. Large stock and inventory in fast moving tray hardware along with a full engineering team to assist and support the end customer during shut down period is one of the major support we extend to all the oil and gas industries in and around GCC.

# Tray Internals and Hardware

## Quality Wire Products

### **VALVE TRAY**

- QWP A1 Type
- QWP A2 Type
- QWP A 3 Type
- QWP QDH & QDP Tray
- QWP QMV Tray
- QWP QMV 1 Tray
- QWP QSVG Tray
- QWP QV-0 Tray
- QWP QV-1 Tray

### **SIEVE TRAY**

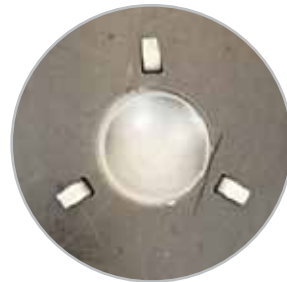
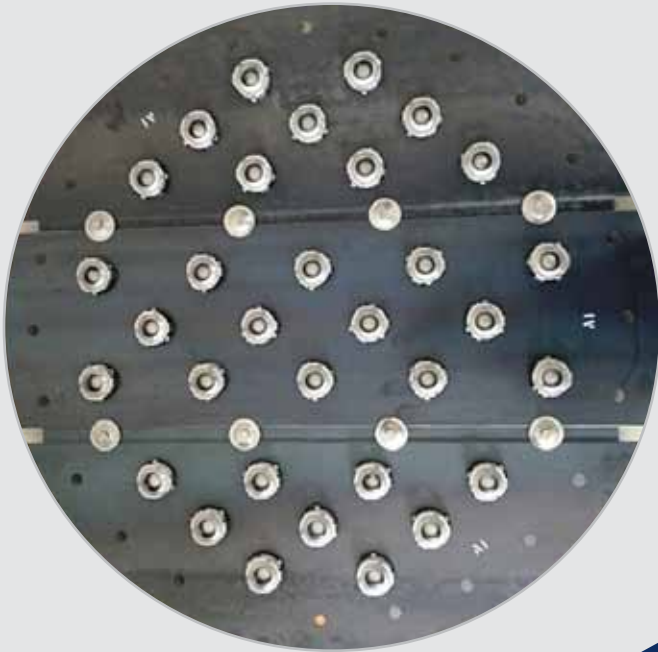
### **BUBBLE CAP TRAY**

### **SHED TRAY**

### **STANDARD HARDWARES**

# Quality Tray products

## QWP A1 Type

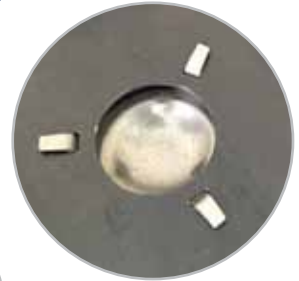
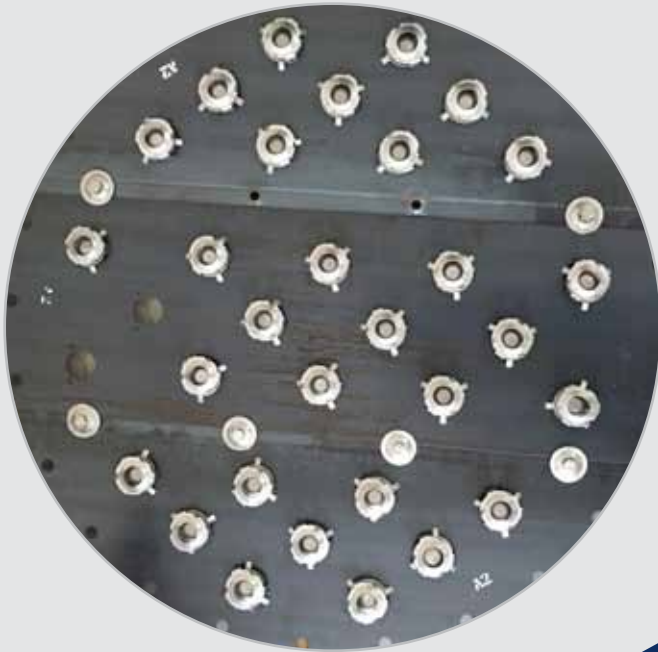


<b>Column dia</b>	400MM to 8000MM	Supplied in segments suitable to pass through manhole
<b>Tray Thickness</b>	2MM to 6MM	According to customer requirement
<b>Material grade</b>	SS409; SS410 ; SS304; SS316L ; SS318L ; Monel ; Inconel and other special alloy	
<b>Replacement hardware</b>	Available for plates and valves and fastners	
<b>Repair work</b>	QWP service centres are located all over GCC where tray repairs are carried out for quick delivery	
<b>Site installation</b>	QWP engineers available for assistance – charges applicable for such support	
<b>Raw Material</b>	Approved Mills European origin	
<b>Support beams and systems</b>	QWP can design support systems based on hydraulic loads and QWP also can offer replacement material for old support systems	
<b>Heat treatment</b>	Included in the offer*	

\* As per the customer requirements

# Quality Tray products

## QWP A2 Type

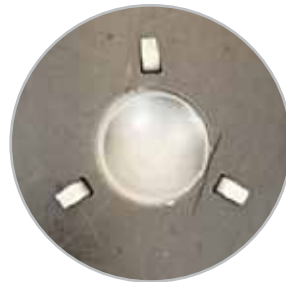
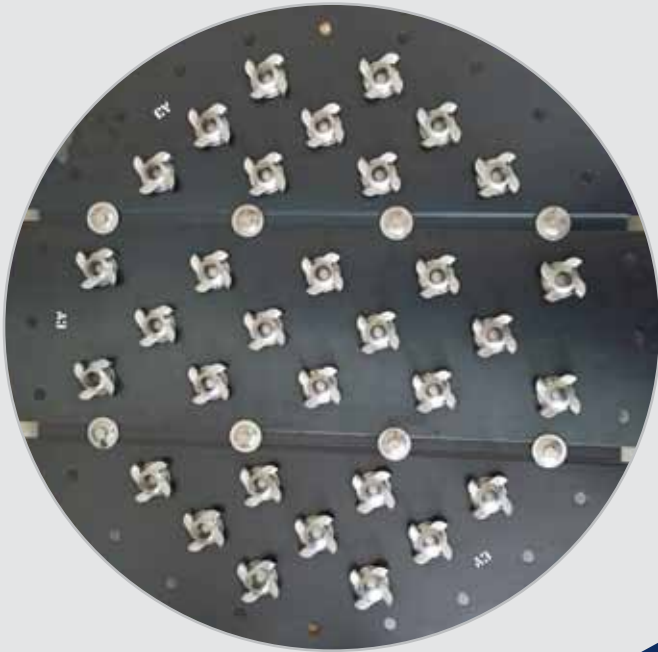


<b>Column dia</b>	400MM to 8000MM	Supplied in segments suitable to pass through manhole
<b>Tray Thickness</b>	2MM to 6MM	According to customer requirement
<b>Material grade</b>	SS409; SS410 ; SS304; SS316L ; SS318L ; Monel ; Inconel and other special alloy	
<b>Replacement hardware</b>	Available for plates and valves and fastners	
<b>Repair work</b>	QWP service centres are located all over GCC where tray repairs are carried out for quick delivery	
<b>Site installation</b>	QWP engineers available for assistance – charges applicable for such support	
<b>Raw Material</b>	Approved Mills European origin	
<b>Support beams and systems</b>	QWP can design support systems based on hydraulic loads and QWP also can offer replacement material for old support systems	
<b>Heat treatment</b>	Included in the offer*	

\* As per the customer requirements

# Quality Tray products

## QWP A3 Type

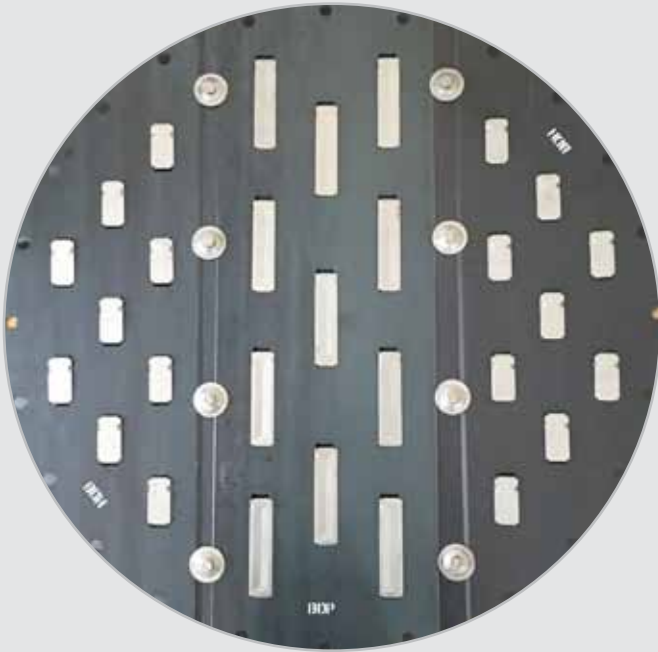


<b>Column dia</b>	400MM to 8000MM	Supplied in segments suitable to pass through manhole
<b>Tray Thickness</b>	2MM to 6MM	According to customer requirement
<b>Material grade</b>	SS409; SS410 ; SS304; SS316L ; SS318L ; Monel ; Inconel and other special alloy	
<b>Replacement hardware</b>	Available for plates and valves and fastners	
<b>Repair work</b>	QWP service centres are located all over GCC where tray repairs are carried out for quick delivery	
<b>Site installation</b>	QWP engineers available for assistance – charges applicable for such support	
<b>Raw Material</b>	Approved Mills European origin	
<b>Support beams and systems</b>	QWP can design support systems based on hydraulic loads and QWP also can offer replacement material for old support systems	
<b>Heat treatment</b>	Included in the offer*	

\* As per the customer requirements

# Quality Tray products

## QWP QDH & QDP Tray



<b>Column dia</b>	400MM to 8000MM	Supplied in segments suitable to pass through manhole
<b>Tray Thickness</b>	2MM to 6MM	According to customer requirement
<b>Material grade</b>	SS409; SS410 ; SS304; SS316L ; SS318L ; Monel ; Inconel and other special alloy	
<b>Replacement hardware</b>	Available for plates and valves and fastners	
<b>Repair work</b>	QWP service centres are located all over GCC where tray repairs are carried out for quick delivery	
<b>Site installation</b>	QWP engineers available for assistance – charges applicable for such support	
<b>Raw Material</b>	Approved Mills European origin	
<b>Support beams and systems</b>	QWP can design support systems based on hydraulic loads and QWP also can offer replacement material for old support systems	
<b>Heat treatment</b>	Included in the offer*	

\* As per the customer requirements

# Quality Tray products

## QWP QMV Tray



<b>Column dia</b>	400MM to 8000MM	Supplied in segments suitable to pass through manhole
<b>Tray Thickness</b>	2MM to 6MM	According to customer requirement
<b>Material grade</b>	SS409; SS410 ; SS304; SS316L ; SS318L ; Monel ; Inconel and other special alloy	
<b>Replacement hardware</b>	Available for plates and valves and fastners	
<b>Repair work</b>	QWP service centres are located all over GCC where tray repairs are carried out for quick delivery	
<b>Site installation</b>	QWP engineers available for assistance – charges applicable for such support	
<b>Raw Material</b>	Approved Mills European origin	
<b>Support beams and systems</b>	QWP can design support systems based on hydraulic loads and QWP also can offer replacement material for old support systems	
<b>Heat treatment</b>	Included in the offer*	

\* As per the customer requirements



# Quality Tray products

## QWP QMV-1 Tray

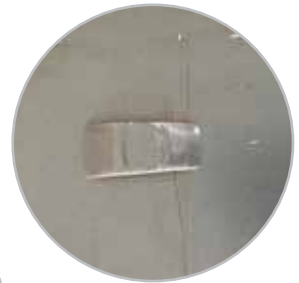


<b>Column dia</b>	400MM to 8000MM	Supplied in segments suitable to pass through manhole
<b>Tray Thickness</b>	2MM to 6MM	According to customer requirement
<b>Material grade</b>	SS409; SS410 ; SS304; SS316L ; SS318L ; Monel ; Inconel and other special alloy	
<b>Replacement hardware</b>	Available for plates and valves and fastners	
<b>Repair work</b>	QWP service centres are located all over GCC where tray repairs are carried out for quick delivery	
<b>Site installation</b>	QWP engineers available for assistance – charges applicable for such support	
<b>Raw Material</b>	Approved Mills European origin	
<b>Support beams and systems</b>	QWP can design support systems based on hydraulic loads and QWP also can offer replacement material for old support systems	
<b>Heat treatment</b>	Included in the offer*	

\* As per the customer requirements

# Quality Tray products

## QWP QSVG Tray



<b>Column dia</b>	400MM to 8000MM	Supplied in segments suitable to pass through manhole
<b>Tray Thickness</b>	2MM to 6MM	According to customer requirement
<b>Material grade</b>	SS409; SS410 ; SS304; SS316L ; SS318L ; Monel ; Inconel and other special alloy	
<b>Replacement hardware</b>	Available for plates and valves and fastners	
<b>Repair work</b>	QWP service centres are located all over GCC where tray repairs are carried out for quick delivery	
<b>Site installation</b>	QWP engineers available for assistance – charges applicable for such support	
<b>Raw Material</b>	Approved Mills European origin	
<b>Support beams and systems</b>	QWP can design support systems based on hydraulic loads and QWP also can offer replacement material for old support systems	
<b>Heat treatment</b>	Included in the offer*	

\* As per the customer requirements

# Quality Tray products

## QWP QV-0 Tray

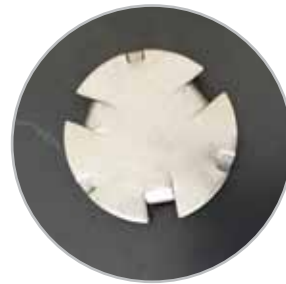
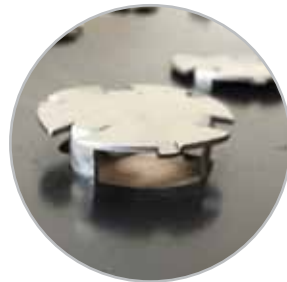


<b>Column dia</b>	400MM to 8000MM	Supplied in segments suitable to pass through manhole
<b>Tray Thickness</b>	2MM to 6MM	According to customer requirement
<b>Material grade</b>	SS409; SS410 ; SS304; SS316L ; SS318L ; Monel ; Inconel and other special alloy	
<b>Replacement hardware</b>	Available for plates and valves and fastners	
<b>Repair work</b>	QWP service centres are located all over GCC where tray repairs are carried out for quick delivery	
<b>Site installation</b>	QWP engineers available for assistance – charges applicable for such support	
<b>Raw Material</b>	Approved Mills European origin	
<b>Support beams and systems</b>	QWP can design support systems based on hydraulic loads and QWP also can offer replacement material for old support systems	
<b>Heat treatment</b>	Included in the offer*	

\* As per the customer requirements

# Quality Tray products

## QWP QV-1 Tray

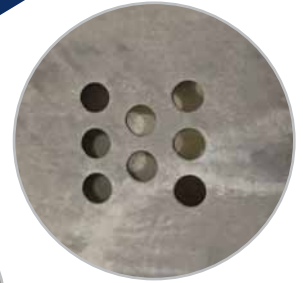
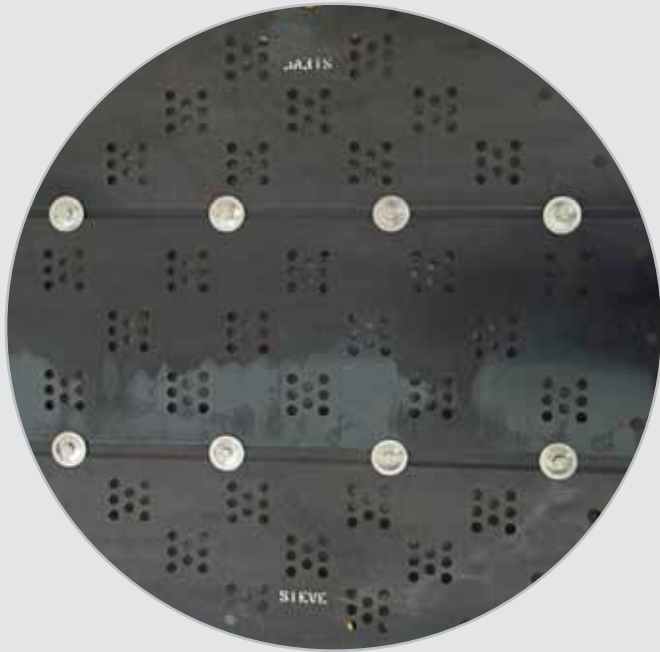


<b>Column dia</b>	400MM to 8000MM	Supplied in segments suitable to pass through manhole
<b>Tray Thickness</b>	2MM to 6MM	According to customer requirement
<b>Material grade</b>	SS409; SS410 ; SS304; SS316L ; SS318L ; Monel ; Inconel and other special alloy	
<b>Replacement hardware</b>	Available for plates and valves and fastners	
<b>Repair work</b>	QWP service centres are located all over GCC where tray repairs are carried out for quick delivery	
<b>Site installation</b>	QWP engineers available for assistance – charges applicable for such support	
<b>Raw Material</b>	Approved Mills European origin	
<b>Support beams and systems</b>	QWP can design support systems based on hydraulic loads and QWP also can offer replacement material for old support systems	
<b>Heat treatment</b>	Included in the offer*	

\* As per the customer requirements

# Quality Tray products

## Sieve Tray



<b>Column dia</b>	400MM to 8000MM	Supplied in segments suitable to pass through manhole
<b>Tray Thickness</b>	2MM to 6MM	According to customer requirement
<b>Material grade</b>	SS409; SS410 ; SS304; SS316L ; SS318L ; Monel ; Inconel and other special alloy	
<b>Replacement hardware</b>	Available for plates and valves and fastners	
<b>Repair work</b>	QWP service centres are located all over GCC where tray repairs are carried out for quick delivery	
<b>Site installation</b>	QWP engineers available for assistance – charges applicable for such support	
<b>Raw Material</b>	Approved Mills European origin	
<b>Support beams and systems</b>	QWP can design support systems based on hydraulic loads and QWP also can offer replacement material for old support systems	
<b>Heat treatment</b>	Included in the offer*	

\* As per the customer requirements

# Quality Tray products

## Bubble Cap Tray



<b>Column dia</b>	400MM to 8000MM	Supplied in segments suitable to pass through manhole
<b>Tray Thickness</b>	2MM to 6MM	According to customer requirement
<b>Material grade</b>	SS409; SS410; SS304; SS316L; SS318L; Monel; Inconel and other special alloy	
<b>Replacement hardware</b>	Available for plates and valves and fastners	

Size	Cap I.D. & Thickness	Cap Height	Raiser I.D. & Thickness	Raiser Height	Support Thickness	Wedge Thickness
3 inch	76.2mm & (1.5 / 2mm)	50mm	35mm	35mm	3mm	4mm
4 inch	98.5mm & (1.5 / 2mm)	67mm	63.5mm & (1.5 / 2mm)	63.5mm	3mm	4mm
5 inch	127mm & (1.5 / 2mm)	84mm	67mm & (1.5 / 2mm)	67mm	3mm	4mm
6 inch	152.4mm & (1.5 / 2mm)	112mm	98.4mm & (1.5 / 2mm)	98.4mm	3mm	4mm



# Quality Tray products

## Shed Tray



<b>Column dia</b>	400MM to 8000MM	Supplied in segments suitable to pass through manhole
<b>Tray Thickness</b>	2MM to 6MM	According to customer requirement
<b>Material grade</b>	SS409; SS410 ; SS304; SS316L ; SS318L ; Monel ; Inconel and other special alloy	
<b>Replacement hardware</b>	Available for plates and valves and fastners	
<b>Repair work</b>	QWP service centres are located all over GCC where tray repairs are carried out for quick delivery	
<b>Site installation</b>	QWP engineers available for assistance – charges applicable for such support	
<b>Raw Material</b>	Approved Mills European origin	
<b>Support beams and systems</b>	QWP can design support systems based on hydraulic loads and QWP also can offer replacement material for old support systems	
<b>Heat treatment</b>	Included in the offer*	

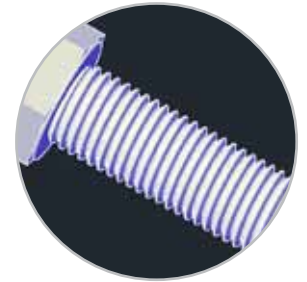
\* As per the customer requirements

# Quality Tray products

## STANDARD HARDWARE

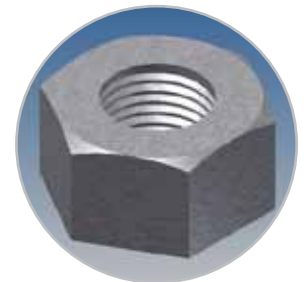
### HEX BOLT SPECIFICATION:

TYPE	SPECIFICATION	MATERIAL GRADE
BOLT HEX. HEAD	M10 X 25MM LONG	CARBON STEEL, SS410, SS430, SS304, SS316L & MONEL 400  OTHER SPECIAL ALLOY AS PER CUSTOMER REQUEST
BOLT HEX. HEAD	M10 X 35MM LONG	
BOLT HEX. HEAD	M10 X 50MM LONG	
BOLT HEX. HEAD	M12 X 35MM LONG	
BOLT HEX. HEAD	M12 X 50MM LONG	
BOLT HEX. HEAD	M12 X 65MM LONG	



### HEX NUT SPECIFICATION:

TYPE	THREAD SIZE	Material Grade
NUT HEXAGONAL	M10	CARBON STEEL, SS410, SS430, SS304, SS316L & MONEL 400  OTHER SPECIAL ALLOY AS PER CUSTOMER REQUEST
NUT HEXAGONAL	M12	



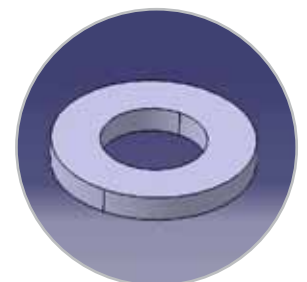
### SQUARE NUT SPECIFICATION:

TYPE	THREAD SIZE	MATERIAL GRADE
SQUARE NUT	M10	CARBON STEEL, SS410, SS430, SS304, SS316L & MONEL 400  OTHER SPECIAL ALLOY AS PER CUSTOMER REQUEST
SQUARE NUT	M12	



### PLAIN WASHER SPECIFICATION:

TYPE	THICKNESS	SPECIFICATION	MATERIAL GRADE
WASHER, PLAIN	2.0MM	11MM ID X 25MM OD	CARBON STEEL, SS410, SS430, SS304, SS316L & MONEL 400  OTHER SPECIAL ALLOY AS PER CUSTOMER REQUEST
WASHER, PLAIN	3.5MM	11MM ID X 25MM OD	
WASHER, PLAIN	2.5MM	14MM ID X 25MM OD	
WASHER, PLAIN	3.5MM	14MM ID X 25MM OD	





# Quality Tray products

## STANDARD HARDWARE

### CONE WASHER SPECIFICATION:

TYPE	THICKNESS	SPECIFICATION	MATERIAL GRADE
WASHER, CONE	2.0MM	11MM ID X 38MM OD	CARBON STEEL, SS410, SS430, SS304, SS316L & MONEL 400 OTHER SPECIAL ALLOY AS PER CUSTOMER REQUEST
WASHER, CONE	3.5MM	11MM ID X 38MM OD	
WASHER, CONE	2.0MM	11MM ID X 44MM OD	
WASHER, CONE	3.5MM	11MM ID X 44MM OD	
WASHER, CONE	2.0MM	11MM ODX 50MM OD	
WASHER, CONE	3.5MM	11MM ID X 50MM OD	
WASHER, CONE	2.0MM	14MM ID X 38MM OD	



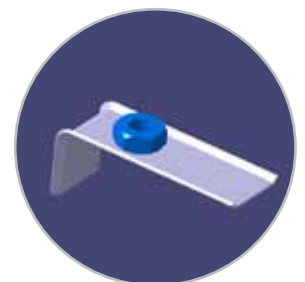
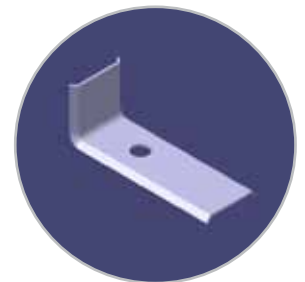
### SPRING WASHER SPECIFICATION:

TYPE	THICKNESS	MATERIAL GRADE
SPRING WASHER	10MM	CARBON STEEL, SS410, SS430, SS304, SS316L & MONEL 400 OTHER SPECIAL ALLOY AS PER CUSTOMER REQUEST
SPRING WASHER	13MM	



### BOTTOM TRAY CLAMPS (L TYPE) SPECIFICATION:

TYPE	HOLE DIA	SHEET THICKNESS	MATERIAL GRADE
CLAMP, BOTTOM TRAY "L"	13MM	3MM	CARBON STEEL, SS410, SS430, SS304, SS316L & MONEL 400 OTHER SPECIAL ALLOY AS PER CUSTOMER REQUEST
CLAMP, BOTTOM TRAY "L"	13MM	3.2MM	
CLAMP, BOTTOM TRAY "L"	13MM	2.6MM	
CLAMP, BOTTOM TRAY "LN", W/NUT	3MM	M10 NUT	
CLAMP, BOTTOM TRAY "LN", W/NUT	3.5MM	M10 NUT	
CLAMP, BOTTOM TRAY "LN", W/NUT	2.5MM	M10 NUT	

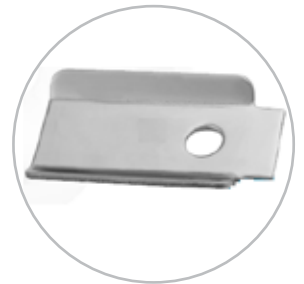
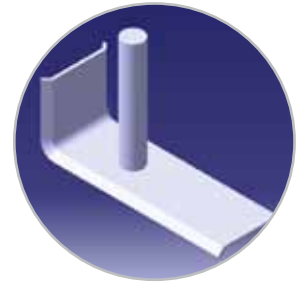


# Quality Tray products

## STANDARD HARDWARE

### BOTTOM TRAY CLAMPS "LB" SPECIFICATION:

DESCRIPTION	THICKNESS	SPECIFICATION	MATERIAL CODE
CLAMP, BOTTOM TRAY "LB", W/BOLT	3MM	M10 X 50mm BOLT	CARBON STEEL, SS410, SS430, SS304, SS316L & MONEL 400  OTHER SPECIAL ALLOY AS PER CUSTOMER REQUEST
CLAMP, BOTTOM TRAY "LB", W/BOLT	3MM	M10 X 65mm BOLT	
CLAMP, BOTTOM TRAY "LB", W/BOLT	3MM	M10 X 75mm BOLT	
CLAMP, BOTTOM TRAY "LB", W/BOLT	3.5MM	M10 X 50mm BOLT	
CLAMP, BOTTOM TRAY "LB", W/BOLT	3.5MM	M10 X 65mm BOLT	
CLAMP, BOTTOM TRAY "LB", W/BOLT	3.5MM	M10 X 75mm BOLT	
CLAMP, BOTTOM TRAY "LB", W/BOLT	2.5MM	M10 X 50mm BOLT	
CLAMP, BOTTOM TRAY "LB", W/BOLT	2.5MM	M10 X 65mm BOLT	
CLAMP, BOTTOM TRAY "LB", W/BOLT	2.5MM	M10 X 75mm BOLT	



### TRAY CLAMPS SPECIFICATION:

DESCRIPTION	THICKNESS	SPECIFICATION	MATERIAL GRADE
TRAY CLAMP # FLOOR TYPE	3.0MM	-	CARBON STEEL, SS410, SS430, SS304, SS316L & MONEL 400  OTHER SPECIAL ALLOY AS PER CUSTOMER REQUEST
TRAY CLAMP # FLOOR TYPE	2.0MM	-	
CLAMP, TOP TRAY # 1	3.0MM	60 & 75MM LONG WITH 11 DIA HOLE	
CLAMP, TOP TRAY # 2	2.0MM	60 & 75MM LONG WITH 11 DIA HOLE	
CLAMP, TYPE # 3	2.5MM	8MM, 11MM, 14MM CLIP LENGTH	
CLAMP, TYPE # 4	3.0MM	8MM, 11MM, 14MM CLIP LENGTH	
CLAMP, TYPE # 5	2.5MM	3MM, 5MM, 8MM CLIP LENGTH	
CLAMP, TYPE # 6	3.0MM	3MM, 5MM, 8MM CLIP LENGTH	
CLAMP, TYPE # 7	2.5MM	13MM CLIP LENGTH	
CLAMP, TYPE # 8	3.0MM	13MM CLIP LENGTH	



# Quality Tray products

## STANDARD HARDWARE

### TRAY CLAMP:

DESCRIPTION	ITEM CODE	SPECIFICATION	MATERIAL GRADE
CLAMP, TYPE # 1	QWP-001	2MM THICK	CARBON STEEL, SS410, SS430, SS304, SS316L & MONEL 400  OTHER SPECIAL ALLOY AS PERCUSTOMER REQUEST
	QWP-002	3MM THICK	
	QWP-003	4MM THICK	
CLAMP, TYPE # 2	QWP-004	2MM THICK, WITH M10 NUT	
	QWP-005	3MM THICK, WITH M10 NUT	
	QWP-006	4MM THICK, WITH M10 NUT	
CLAMP, TYPE # 3 & 4	QWP-007	2MM THICK, WITH M10 X 50 LG BOLT	
	QWP-008	2MM THICK, WITH M10 X 65 LG BOLT	
	QWP-009	2MM THICK, WITH M10 X 75 LG BOLT	
	QWP-010	3MM THICK, WITH M10 X 50 LG BOLT	
	QWP-011	3MM THICK, WITH M10 X 65 LG BOLT	
	QWP-012	3MM THICK, WITH M10 X 75 LG BOLT	
	QWP-013	3MM THICK, WITH M10 X 50 LG BOLT	
	QWP-014	3MM THICK, WITH M10 X 65 LG BOLT	
	QWP-015	3MM THICK, WITH M10 X 75 LG BOLT	
CLAMP, TYPE # 5	QWP-016	3MM THICK (FOR USE OF MAX 16MM SUPPORT THICKNESS)	
	QWP-017	3MM THICK (FOR USE OF MAX 16MM SUPPORT THICKNESS)	
	QWP-018	2MM THICK (FOR USE OF 17MM & 19MM SUPP. THICKNESS)	
	QWP-019	3MM THICK (FOR USE OF 17MM & 19MM SUPP. THICKNESS)	

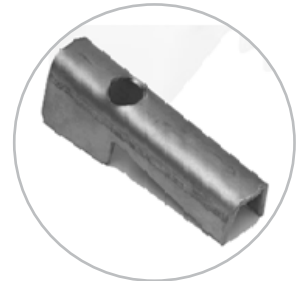
### U-LEVER CLAMP:

DESCRIPTION	ITEM CODE	SPECIFICATION	MATERIAL GRADE
CLAMP # 1	QWP-001	2.0 MM THICK, 10 DIA HOLE	CARBON STEEL, SS410, SS430, SS304, SS316L & MONEL 400
CLAMP # 2	QWP-002	2.5 MM THICK, 10 DIA HOLE	
CLAMP # 3	QWP-003	3.0 MM THICK, 10 DIA HOLE	OTHER SPECIAL ALLOY AS PER CUSTOMER REQUEST

U - Lever Clamp is available with welded bolt also, Specify bolt diameter and length when ordering.

### QWP - LOCK WASHER SPECIFICATION:

TYPE	THICKNESS	MATERIAL GRADE
LOCK WASHER # 1	5MM	CARBON STEEL, SS410, SS430, SS304, SS316L & MONEL 400
LOCK WASHER # 2	6MM	OTHER SPECIAL ALLOY AS PER CUSTOMER REQUEST



# Quality Tray products

## STANDARD HARDWARE

### MANYWAY FIX CLAMPS # 1 (HEXAGONAL) SPECIFICATION:

TYPE	THICKNESS	MATERIAL GRADE
FIX CLAMP, HEXAGONAL	5MM FOR M10 STUD	CARBON STEEL, SS410, SS430, SS304, SS316L & MONEL 400  OTHER SPECIAL ALLOY AS PER CUSTOMER REQUEST
FIX CLAMP, HEXAGONAL	6MM FOR M10 STUD	



### MANYWAY FIX CLAMPS # 2 (POINTER) SPECIFICATION:

DESCRIPTION	SPECIFICATION	MATERIAL GRADE
FIX CLAMP, POINTER	3.5 MM THICKNESS, FOR M12 STUD	CARBON STEEL, SS410, SS430, SS304, SS316L & MONEL 400  OTHER SPECIAL ALLOY AS PER CUSTOMER REQUEST

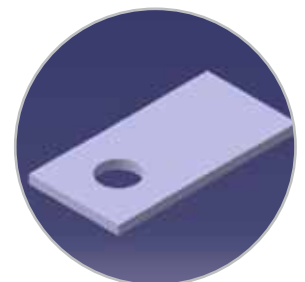
### MANWAY WASHER “Semi Circular” TYPE SPECIFICATION:

DESCRIPTION	SPECIFICATION	MATERIAL GRADE
WASHER, MANWAY, SEMI CIRCULAR SHAPE MANWAY STUD	2.5MM THICKNESS, 25MM od. W/HOLE FOR 10MM MAYWAY STUD	CARBON STEEL, SS410, SS430, SS304, SS316L & MONEL 400  OTHER SPECIAL ALLOY AS PER CUSTOMER REQUEST



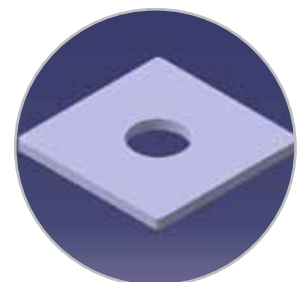
### MANWAY RECTANGULAR CLAMPS SPECIFICATION:

DESCRIPTION	SPECIFICATION	MATERIAL GRADE
RECTANGULAR CLAMP, MANWAY SEAL	3.0 MM THICKNESS	CARBON STEEL, SS410, SS430, SS304, SS316L & MONEL 400  OTHER SPECIAL ALLOY AS PER CUSTOMER REQUEST
RECTANGULAR CLAMP, MANWAY SEAL	3.5 MM THICKNESS	
RECTANGULAR CLAMP, MANWAY SEAL	2.5 MM THICKNESS	



### CONNECTING PLATE SPECIFICATION:

DESCRIPTION	SPECIFICATION	MATERIAL GRADE
CONNECTING PLATE	2.0 MM THICKNESS, 102MM WIDE	CARBON STEEL, SS410, SS430, SS304, SS316L & MONEL 400  OTHER SPECIAL ALLOY AS PER CUSTOMER REQUEST
CONNECTING PLATE	2.5 MM THICKNESS, 102MM WIDE	
CONNECTING PLATE	3.5 MM THICKNESS, 102MM WIDE	
CONNECTING PLATE	5.0 MM THICKNESS, 102MM WIDE	
CONNECTING PLATE	6.0 MM THICKNESS, 102MM WIDE	
CONNECTING PLATE	2.0 MM THICKNESS, 51MM WIDE	
CONNECTING PLATE	2.5 MM THICKNESS, 51MM WIDE	
CONNECTING PLATE	3.5 MM THICKNESS, 51MM WIDE	
CONNECTING PLATE	5.0 MM THICKNESS, 51MM WIDE	
CONNECTING PLATE	6.0 MM THICKNESS, 51MM WIDE	



# Quality Tray products

## STANDARD HARDWARE

### LOCK PLATES SPECIFICATION:

DESCRIPTION	SPECIFICATION	MATERIAL GRADE
LOCK PLATE # 1	2.0 MM THICK, 50MM, 75MM, 90MM, 100MM, 115MM & 125MM LONG	CARBON STEEL, SS410, SS430, SS304, SS316L & MONEL 400  OTHER SPECIAL ALLOY AS PER CUSTOMER REQUEST
LOCK PLATE # 2	2.0MM THICK	
LOCK PLATE # 3	2.5MM THICK	
LOCK PLATE # 4	1.5MM THICK	

### L-ANGLE CONNECTORS SPECIFICATION:

DESCRIPTION	SPECIFICATION	MATERIAL GRADE
L - ANGLE # 1.A	75 MM LONG X 2.5 MM THICKNESS	CARBON STEEL, SS410, SS430, SS304, SS316L & MONEL 400  OTHER SPECIAL ALLOY AS PER CUSTOMER REQUEST
L - ANGLE # 1.B	75 MM LONG X 3.0 OR 3.5 MM THICKNESS	
L - ANGLE # 1.C	75 MM LONG X 5 MM THICKNESS	
L - ANGLE # 2.A	150 MM LONG X 2.5 MM THICKNESS	
L - ANGLE # 2.B	150 MM LONG X 3.0 OR 3.5 MM THICKNESS	
L - ANGLE # 2.C	150 MM LONG X 5 MM THICKNESS	
L - ANGLE # 3.A	125 MM LONG X 2.5 MM THICKNESS	
L - ANGLE # 3.B	130 MM LONG X 3.0 OR 3.5 MM THICKNESS	
L - ANGLE # 3.C	135 MM LONG X 5 MM THICKNESS	

### THREADED STUDS # 1 TO 4 SPECIFICATION:

DESCRIPTION	SPECIFICATION	MATERIAL GRADE
THREADED STUD # 1	M10 X 50 MM LONG	CARBON STEEL, SS410, SS430, SS304, SS316L & MONEL 400  OTHER SPECIAL ALLOY AS PER CUSTOMER REQUEST
THREADED STUD # 2	M10 X 65 MM LONG	
THREADED STUD # 3	M12 X 65 MM LONG	
THREADED STUD # 4	M12 X 75 MM LONG	

### THREADED LOCK STUDS # 5 TO 7 SPECIFICATION:

DESCRIPTION	SPECIFICATION	MATERIAL GRADE
THREADED LOCK STUD # 5	M10 X 40 MM LONG	CARBON STEEL, SS410, SS430, SS304, SS316L & MONEL 400  OTHER SPECIAL ALLOY AS PER CUSTOMER REQUEST
THREADED LOCK STUD # 6	M10 X 50 MM LONG	
THREADED LOCK STUD # 7	M10 X 65 MM LONG	

# Quality Tray products

## STANDARD HARDWARE

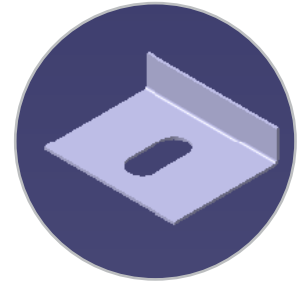
### “T” BOLT (MANWAY) SPECIFICATION:

DESCRIPTION	SPECIFICATION	MATERIAL GRADE
TEE BOLT (MANWAY) # 1	M10 X 50MM LONG	CARBON STEEL, SS410, SS430, SS304, SS316L & MONEL 400
TEE BOLT (MANWAY) # 2	M13 X 50MM LONG	OTHER SPECIAL ALLOY AS PER CUSTOMER REQUEST

### L-ANGLES #1 to 3 SPECIFICATION:

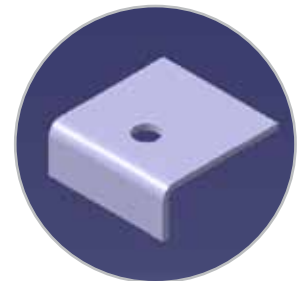
DESCRIPTION	SPECIFICATION	MATERIAL GRADE
L - ANGLE # 1	2 MM THICKNESS	CARBON STEEL, SS410, SS430, SS304, SS316L & MONEL 400
L - ANGLE # 2	3 MM THICKNESS	OTHER SPECIAL ALLOY AS PER CUSTOMER REQUEST
L - ANGLE # 3	6 MM THICKNESS	

Clip Angles will be supplied with slotted holes & round holes (as per customer requirement)  
 As per customer requirement clip angles will be available with welded nuts also.



### U - CLAMP SPECIFICATION:

DESCRIPTION	SPECIFICATION	MATERIAL GRADE
U - CLAMP # 1	3 MM THICKNESS, 11 MM HOLE	CARBON STEEL, SS410, SS430, SS304, SS316L & MONEL 400
U - CLAMP # 2	3 MM THICKNESS, 14 MM HOLE	
U - CLAMP # 3	2 MM THICKNESS, 11 MM HOLE	OTHER SPECIAL ALLOY AS PER CUSTOMER REQUEST
U - CLAMP # 4	2 MM THICKNESS, 14 MM HOLE	



### TRIANGULAR WEDGE # 1 & 2 SPECIFICATION:

DESCRIPTION	SPECIFICATION	MATERIAL GRADE
TRIANGULAR WEDGE # 1	3 MM THICKNESS, 11 MM HOLE	CARBON STEEL, SS410, SS430, SS304, SS316L & MONEL 400
TRIANGULAR WEDGE # 2	3 MM THICKNESS, 14 MM HOLE	OTHER SPECIAL ALLOY AS PER CUSTOMER REQUEST

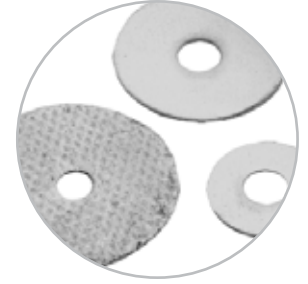


# Quality Tray products

## STANDARD HARDWARE

### WASHER GASKETS:

DESCRIPTION	SPECIFICATION	MATERIAL GRADE
GASKET, WASHER # Q1	1.5 MM THICKNESS, 10MM ID X 25MM OD	PVDF FIBRE GLASS PVC TEFLON
GASKET, WASHER # Q2	1.5 MM THICKNESS, 10MM ID X 30MM OD	
GASKET, WASHER # Q3	1.5 MM THICKNESS, 10MM ID X 35MM OD	
GASKET, WASHER # Q4	1.5 MM THICKNESS, 10MM ID X 45MM OD	
GASKET, WASHER # Q5	1.5 MM THICKNESS, 10MM ID X 50MM OD	
GASKET, WASHER # Q6	3.0 MM THICKNESS, 10MM ID X 25MM OD	
GASKET, WASHER # Q7	3.0 MM THICKNESS, 10MM ID X 30MM OD	
GASKET, WASHER #Q8	3.0 MM THICKNESS, 10MM ID X 35MM OD	
GASKET, WASHER # Q9	3.0 MM THICKNESS, 10MM ID X 45MM OD	
GASKET, WASHER # Q10	3.0 MM THICKNESS, 10MM ID X 50MM OD	



### GASKET TAPE:

DESCRIPTION	SPECIFICATION	MATERIAL GRADE
GASKET, TAPE # Q1	1.5 MM THICKNESS, 25 MM WIDTH	PVDF FIBRE GLASS PVC TEFLON
GASKET, TAPE # Q2	1.5 MM THICKNESS, 30 MM WIDTH	
GASKET, TAPE # Q3	1.5 MM THICKNESS, 40 MM WIDTH	
GASKET, TAPE # Q4	1.5 MM THICKNESS, 50 MM WIDTH	
GASKET, TAPE # Q5	1.5 MM THICKNESS, 65 MM WIDTH	
GASKET, TAPE # Q6	1.5 MM THICKNESS, 75 MM WIDTH	
GASKET, TAPE # Q7	3.0 MM THICKNESS, 25 MM WIDTH	
GASKET, TAPE # Q8	3.0 MM THICKNESS, 30 MM WIDTH	
GASKET, TAPE # Q9	3.0 MM THICKNESS, 40 MM WIDTH	
GASKET, TAPE # Q10	3.0 MM THICKNESS, 50 MM WIDTH	
GASKET, TAPE # Q11	3.0 MM THICKNESS, 65 MM WIDTH	
GASKET, TAPE # Q12	3.0 MM THICKNESS, 75 MM WIDTH	



# Quality Tray products

## STANDARD HARDWARE

### TWISTED/BRAIDED GASKET ROPES (SQUARE & ROUND)

DESCRIPTION	SPECIFICATION	MATERIAL GRADE
ROPE, GASKET, SQUARE #Q1	3MM X 3MM	PVDF FIBRE GLASS PVC TEFLON
ROPE, GASKET, SQUARE #Q2	10MM X 10MM	
ROPE, GASKET, SQUARE #Q3	13MM X 13MM	
ROPE, GASKET, SQUARE #Q4	16MM X 16MM	
ROPE, GASKET, SQUARE #Q5	19MM X 19MM	
ROPE, GASKET, SQUARE #Q6	6MM X 6MM	
ROPE, GASKET, SQUARE #Q7	25MM X 25MM	
ROPE, GASKET, SQUARE #Q8	28MM X 28MM	
ROPE, GASKET, SQUARE #Q9	32MM X 32MM	
ROPE, GASKET, SQUARE #Q10	38MM X 38MM	
ROPE, GASKET, ROUND # Q11	3MM DIAMETER	
ROPE, GASKET, ROUND # Q12	10MM DIAMETER	
ROPE, GASKET, ROUND # Q13	13MM DIAMETER	
ROPE, GASKET, ROUND # Q14	16MM DIAMETER	
ROPE, GASKET, ROUND # Q15	19MM DIAMETER	
ROPE, GASKET, ROUND # Q16	6MM DIAMETER	
ROPE, GASKET, ROUND # Q17	25MM DIAMETER	
ROPE, GASKET, ROUND # Q18	28MM DIAMETER	
ROPE, GASKET, ROUND # Q19	32MM DIAMETER	
ROPE, GASKET, ROUND # Q20	38MM DIAMETER	



# Quality Tray products

## STANDARD HARDWARE

### V1 TYPE TRAY HEADS CAP HARDWARE SPARES

DESCRIPTION	ITEM CODE	SPECIFICATION	MATERIAL GRADE
V1 HEAD CAP, TYPE # 1	QWP-001	3.0MM THICK, 11MM CLIP LENGTH	CARBON STEEL, SS410, SS430, SS304, SS316L & MONEL 400  OTHER SPECIAL ALLOY AS PER CUSTOMER REQUEST
	QWP-002	3.0MM THICK, 13MM CLIP LENGTH	
	QWP-003	3.0MM THICK, 14MM CLIP LENGTH	
V1 HEAD CAP, TYPE # 2	QWP-004	2.5MM THICK, 11MM CLIP LENGTH	
	QWP-005	2.5MM THICK, 13MM CLIP LENGTH	
	QWP-006	2.5MM THICK, 14MM CLIP LENGTH	
V1 HEAD CAP, TYPE # 3	QWP-007	2.0MM THICK, 11MM CLIP LENGTH	
	QWP-008	2.0MM THICK, 13MM CLIP LENGTH	
	QWP-009	2.0MM THICK, 14MM CLIP LENGTH	
V1 HEAD CAP, TYPE # 4	QWP-010	1.5MM THICK, 11MM CLIP LENGTH	
	QWP-011	1.5MM THICK, 13MM CLIP LENGTH	
	QWP-012	1.5MM THICK, 14MM CLIP LENGTH	
V1 HEAD CAP, TYPE # 5	QWP-013	1.2MM THICK, 11MM CLIP LENGTH	
	QWP-014	1.2MM THICK, 13MM CLIP LENGTH	
	QWP-015	1.2MM THICK, 14MM CLIP LENGTH	
V1 HEAD CAP, TYPE # 6	QWP-016	3.0MM THICK, 10MM CLIP LENGTH	
	QWP-017	2.5MM THICK, 10MM CLIP LENGTH	
	QWP-018	2.0MM THICK, 10MM CLIP LENGTH	
	QWP-019	1.5MM THICK, 10MM CLIP LENGTH	
	QWP-020	1.2MM THICK, 10MM CLIP LENGTH	



### CAGE TYPE TRAY HEADS CAP HARDWARE SPARES

DESCRIPTION	ITEM CODE	SPECIFICATION	MATERIAL GRADE
CAGE CAP HEAD, TYPE # 1	QWP-001	3.0MM THICK, CAGE & TRAY PLATE	CARBON STEEL, SS410, SS430, SS304, SS316L & MONEL 400  OTHER SPECIAL ALLOY AS PER CUSTOMER REQUEST
	QWP-002	2.5MM THICK, CAGE & TRAY PLATE	
	QWP-003	2.0MM THICK, CAGE & TRAY PLATE	
CAGE CAP HEAD, TYPE # 2	QWP-004	3.0MM THICK, CAGE & TRAY PLATE	
	QWP-005	2.5MM THICK, CAGE & TRAY PLATE	
	QWP-006	2.0MM THICK, CAGE & TRAY PLATE	
CAGE CAP HEAD, TYPE # 3	QWP-007	2.5MM THICK, CAGE & TRAY PLATE	
	QWP-008	2.0MM THICK, CAGE & TRAY PLATE	
	QWP-009	1.5MM THICK, CAGE & TRAY PLATE	



# Quality Tray products

## STANDARD HARDWARE

### V-0 TYPE TRAY HEADS CAP HARDWARE SPARES

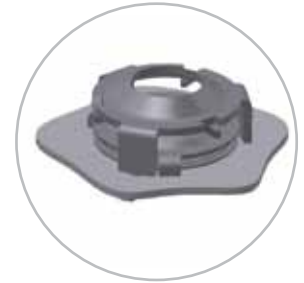
DESCRIPTION	ITEM CODE	SPECIFICATION	MATERIAL GRADE
V-0 HEAD CAP, TYPE # 1	QWP-001	1.2MM THICK, 8MM LEG LENGTH	CARBON STEEL, SS410, SS430, SS304, SS316L & MONEL 400  OTHER SPECIAL ALLOY AS PER CUSTOMER REQUEST
	QWP-002	1.5MM THICK, 8MM LEG LENGTH	
	QWP-003	2.0MM THICK, 8MM LEG LENGTH	
	QWP-004	1.2MM THICK, 10MM LEG LENGTH	
	QWP-005	1.5MM THICK, 10MM LEG LENGTH	
	QWP-006	2.0MM THICK, 10MM LEG LENGTH	
V-0 HEAD CAP, TYPE # 2	QWP-007	1.2MM THICK, 10MM LEG LENGTH	
	QWP-008	1.2MM THICK, 5MM LEG LENGTH	
	QWP-009	1.5MM THICK, 8MM LEG LENGTH	
V-0 HEAD CAP, TYPE # 3	QWP-010	1.5MM THICK	
V-0 HEAD CAP, TYPE # 4	QWP-011	1.5MM THICK	
	QWP-012	2MM THICK	
V-0 HEAD CAP, TYPE # 5	QWP-013	1.5MM THICK, 12.0MM LEG LENGTH	
	QWP-014	1.5MM THICK, 13MM LEG LENGTH	
	QWP-015	1.5MM THICK, 15.0MM LEG LENGTH	
	QWP-016	2.0MM THICK, 12.0MM LEG LENGTH	
	QWP-017	2.0MM THICK, 13MM LEG LENGTH	
	QWP-018	2.0MM THICK, 15.0MM LEG LENGTH	
V-0 HEAD CAP, TYPE # 6	QWP-001	3.5MM THICK, 13MM LIFT & 7MM TAB WIDTH	
	QWP-002	3.0MM THICK, 13MM LIFT & 7MM TAB WIDTH	
	QWP-003	2.5MM THICK, 13MM LIFT & 7MM TAB WIDTH	
	QWP-004	2.0MM THICK, 13MM LIFT & 7MM TAB WIDTH	
	QWP-005	1.5MM THICK, 13MM LIFT & 7MM TAB WIDTH	
	QWP-006	1.0MM THICK, 13MM LIFT & 7MM TAB WIDTH	

# Quality Tray products

## STANDARD HARDWARE

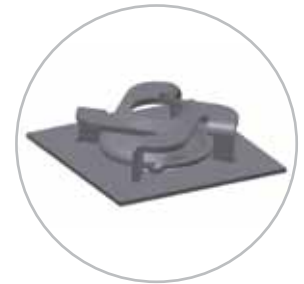
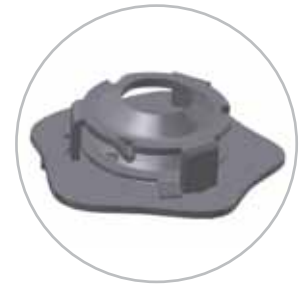
### BDH & BDP TRAY HEAD CAP HARDWARE SPARES

DESCRIPTION	ITEM CODE	SPECIFICATION	MATERIAL GRADE
BDH & BDP HEAD CAP, TYPE #1	QWP-001	1.0MM THICK, 11MM LEG LENGTH	CARBON STEEL, SS410, SS430, SS304, SS316L & MONEL 400  OTHER SPECIAL ALLOY AS PER CUSTOMER REQUEST
BDH & BDP HEAD CAP, TYPE #2	QWP-002	1.2MM THICK, 10MM LEG LENGTH	
BDH & BDP HEAD CAP, TYPE #3	QWP-003	1.5MM THICK, 12MM LEG LENGTH	
BDH & BDP HEAD CAP, TYPE #4	QWP-004	2.0MM THICK, 14MM LEG LENGTH	
BDH & BDP HEAD CAP, TYPE #5	QWP-005	1.0MM THICK, 11MM LEG LENGTH	
BDH & BDP HEAD CAP, TYPE #6	QWP-006	1.2MM THICK, 10MM LEG LENGTH	
BDH & BDP HEAD CAP, TYPE #7	QWP-007	1.5MM THICK, 13MM LEG LENGTH	
BDH & BDP HEAD CAP, TYPE #8	QWP-008	2.0MM THICK, 14MM LEG LENGTH	



### A1 , A2 & A3 TRAY HEAD CAP HARDWARE SPARES

TYPE	ITEM	THICKNESS	CLIP LENGTH	RIM LENGTH	MATERIAL GRADE
A1 TYPE	TRAVEL STOP	1.5MM	2MM	-	CARBON STEEL, SS410, SS430, SS304, SS316L & MONEL 400
		2MM			
		3MM			
	BALLAST PLATE	1.5MM	-	6MM	
		2MM			
		3MM			
COVER	1.5MM	-	-		
	2MM				
	3MM				
A2 TYPE	TRAVEL STOP	1.5MM	4MM	-	OTHER SPECIAL ALLOY AS PER CUSTOMER REQUEST
		2MM			
		3MM			
	BALLAST PLATE	1.5MM	-	3MM	
		2MM			
		3MM			
A3 TYPE	TRAVEL STOP	1.5MM	4MM	-	
		2MM			
		3MM			
	BALLAST PLATE	1.5MM	-	-	
		2MM			
		3MM			





[www.qualitywire.com.bh](http://www.qualitywire.com.bh)

**Head Office / Factory**

**Quality Wire Products Co. WLL**

Bldg. No. 86, Road 19, Block 115, Salman Industrial City, Hidd  
Kingdom of Bahrain, P.O. Box 33450  
Tel.: +973 17 874000 / 456343, Fax: +973 17 874111 / 456312  
[quality@batelco.com.bh](mailto:quality@batelco.com.bh) / [sales.bahrain@qualitywire.com.bh](mailto:sales.bahrain@qualitywire.com.bh)

**Warehouse / Office - Sharjah**

**Quality Wire Products OET (SHJ) LLC**

P.O. Box 44377, Sharjah - UAE  
Tel.: +971 6 5357 007, Fax: +971 6 5357 061, [dx bqwp@qualitywire.com.bh](mailto:dx bqwp@qualitywire.com.bh)

**Sales Office - Qatar**

**Quality Wire Products Company**

Logic Real Estate Building, P.O. Box 24692, Doha Jadeed - Qatar  
Tel.: +974 44416175, Fax: +974 44417292, [sales@qualitywireqatar.com](mailto:sales@qualitywireqatar.com)

**Sales Office - Abu Dhabi**

**Quality Wire Products OET LLC**

P.O. Box 36218, Abu Dhabi - UAE  
Tel.: +971 2 4952772, Fax: +971 2 6740066, [dx bqwp@qualitywire.com.bh](mailto:dx bqwp@qualitywire.com.bh)

**Sales Office - Kingdom of Saudi Arabia**

**Quality Wire Products Company**

Jubail, Albuainain Agency, The Swedish Industrial Neighborhood  
Abu Saad, Block-5, Building:6, P.O. Box: 35102, Zip Code:31967